

ADALTIS INC.

10900 HAMON MONTREAL (QC) H3M 3A2

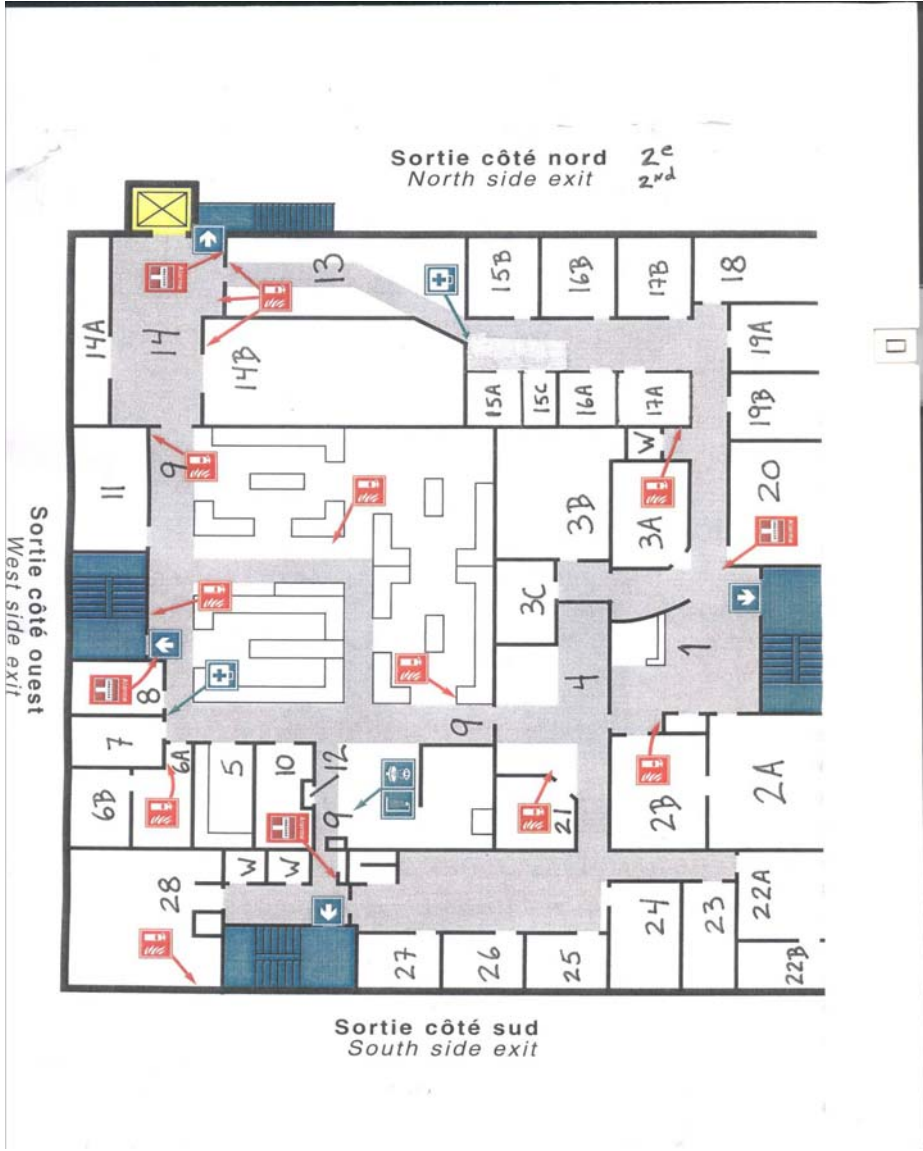
ASSET INVENTORY

AS AT AUG 4TH, 2009

INDEX

FLOOR PLANS

LOT 1	OFFICE EQUIPMENT	PG. 01
LOT 2	COMPUTER EQUIPMENT	PG. 11
LOT 3	SERVERS	PG. 18
LOT 4	LAB & SCIENTIFIC EQUIPMENT	PG. 19
LOT 4b)	LAB TABLES AND COUNTERS	PG. 25
LOT 5	SHOP & PACKAGING EQUIPMENT	PG. 26
LOT 6	TELEPHONE SYSTEM	PG. 31
LOT 7	SURVEILLANCE AND ACCESS CONTROL	PG. 33
LOT 8	BUILDING COMPONENTS	PG. 34
LOT 9	PROPERTY OF OTHERS	PG. 36



Sortie côté nord
North side exit 2^e
2nd

Sortie côté ouest
West side exit

Sortie côté sud
South side exit

LOT 1
OFFICE EQUIPMENT

ADALTIS INC. (10900 HAMON)

OFFICE EQUIPMENT

LOCATION/ROOM	DESCRIPTION	QTY
2ND FLOOR / ENTRANCE		
	Natural potted plant	1
	Wall mounted print, 46"x70"	1
	Plastic snow scraper	1
2ND FLOOR / RECEPTION		
	Wall mounted, aluminum welcome board cabinet, 24"x36", glass door	1
	End table, 22"x26", glass top	1
	Black vinyl sofa, 3 seat	1
	Natural potted plant	1
	Wall mounted clock	1
	Burgundy melamine L-shaped reception desk, 96"x41", with glass top	1
	Assorted artificial plants	2
	Waste paper basket	1
	Black melamine storage unit on casters, 3 drawer	1
	Black vinyl secretary armchair on casters	1
	Burgundy melamine credenza, 2 drawer, 2 door, 71"x20"	1
	Black vinyl and chrome visitor's armchairs	2
	End table, 22"x26", glass top	1
	Natural potted plant	1
	Ceiling mounted C-shaped light rail, 5 spots	1
2ND FLOOR / 2A - OFFICE		
	Brown wooden desk, 35"x72", 4 drawer	1
	Brown wooden credenza, 72"x20", 2 door, 2 drawer	1
	Assorted natural potted plants	3
	Decorative artificial plants	2
	Black vinyl highback chair on casters	1
	Black vinyl armchairs on casters	5
	Brown wooden bookcase, 36"x15"x48", 3 shelves	1
	Brown wooden meeting table, 42"x42"	1
	Wall mounted world map, 45"x30"	1
	Waste paper basket	1
	Wall mounted, black melamine whiteboard cabinet, 48"x44", 2 door	1
	Wall mounted painting, 52"x42"	1
2ND FLOOR / 2B - OFFICE		
	Kilotech general purpose scale model: AM5002PL, 50lbs cap.	1
	Beige metal filing cabinets, 4 drawer, lateral	2
	Light brown melamine workstation, V-shaped	1
	Light brown melamine storage unit on casters, 3 drawer	1
	Beige fabric armchair on casters	1
	Waste paper basket	1
	Metal footrest	1
	Super electric space heater	1
	Brown wooden bookcase, 36"x15"x48", 3 shelves	1
	Brown wooden filing cabinet, 2 drawer, lateral	1
	Black vinyl executive armchair on casters	1
	Wall mounted prints	1
2ND FLOOR / 3A - OFFICE		
	Beige fabric armchairs on casters	3

LOCATION/ROOM	DESCRIPTION	QTY
	Grey fabric secretary chair on casters	1
	Maple brown melamine table 42"x42"	1
	Maple brown melamine storage unit on casters, 2 drawer	1
	Flip chart easel	1
	Beige metal filing cabinet, lateral, 4 drawer	2
	Waste paper basket	1
2ND FLOOR / 3B - CONFERENCE ROOM		
	Burgundy melamine conference table, 144"x48", 3-section	1
	Blue fabric highback armchair's on casters	9
	Wall mounted dry-erase whiteboard, 96"x48"	1
	Apollo flip chart easel	1
	Bretford wall mounted retractable projection screen, 60"	1
	Waste paper basket	1
	Danby KitchenTek burgundy melamine / white barfridge	1
	Burgundy melamine, wall mounted whiteboard cabinet, 48"x48", 2 doors	1
	Burgundy melamine credenza, 70"x20", 4 door	1
	Newco Enterprises electric 2-station warmer model: X-2, s/n X0017006	1
	Custom-built burgundy melamine cabinet, 54"x16"x84", 6 doors	1
	Custom-built burgundy melamine cabinet, 60"x21"x92" (approx), 7 doors	1
	Canon digital multi-media projector model: LV-5100	1
	Dukane overhead projector model: 5500	1
	3M overhead projector model: 910	1
	Infocus multi-media projection panel model: Powerview 820	1
	Kodak slide projector model: Carousel 4600, w/4 slide trays	1
2ND FLOOR / 3C - STORAGE:STATIONARY		
	Sections of black metal shelving, 6 shelves, 36"x16"x70"	2
	Beige metal cabinet, 2 door	1
	Black metal cabinet, 2 door	1
	Assorted tape calculators	5
	GBC VeloBind binding machine model: System One	1
	Brother Electric Correctronic typewriter model: GX-6750	1
	Lot of various and assorted office sundry and supplies	1
2ND FLOOR / 4 - CUBICLES		
	Assorted pink fabric cubicle wall panels	8
	Assorted metal filing cabinets, 4 drawer, lateral	7
	Beige metal filing cabinet, 4 drawer, legal	1
	Beige metal storage unit on casters, 3 drawer	1
	Waste paper basket	1
	Black metal office carts	2
	Ibico binding machine	1
	Grey melamine computer cart, w/retractable keyboard tray	1
	Corkboard, 48"x36"	1
	Maple brown melamine storage unit on casters, 2 drawer	1
	Light brown melamine desk, 1 drawer, w/retractable tray	1
	Waste paper basket	1
	Black fabric steno armchair on casters	1
	Beige metal filing cabinet, 4 drawer, lateral	1
	Black fabric executive armchair on casters	1
	Maple brown melamine storage unit on casters, 3 drawer	1
	White melamine, wall mounted bookshelf, 3 shelves	1
2ND FLOOR / 5 - LAB OFFICE		
	Maple melamine desk, 60"x30", 3 drawer, with retractable keyboard tray	2
	Chrome pedestal coat rack	1

LOCATION/ROOM	DESCRIPTION	QTY
	Assorted black fabric highback armchairs on casters	2
	Waste paper basket	1
	Oak melamine bookcase, 36"x12"x72", 5 shelves	1
	Corkboards, 36"x24"	3
	Wall mounted, grey metal keybox, 8"x10"	1
	Biege metal filing cabinet, 4 drawer, legal	1
2ND FLOOR / 6A - LAB OFFICE		
	Grey fabric armchair on casters	1
	Black fabric highback armchair on casters	1
	Waste paper basket	1
	Maple melamine desk, 60"x30", 3 drawer	1
	Oak melamine bookcase, 36"x12"x48", 3 shelves	2
	Maple melamine bookcase, 30"x12"x58", 8 unit	1
2ND FLOOR / 6B - LAB OFFICE		
	Beige metal filing cabinet, 4 drawer, lateral	1
	Black fabric highback armchair on casters	1
	Beige fabric armchair on casters	1
	Beige melamine printer unit 25"x19"x28"	1
	Calore electric ceramic heater	1
	Maple melamine desk, 60"x30", 3 drawer	1
	Waste paper basket	1
2ND FLOOR / 7 - LAB OFFICE		
	Wooden workstation, L-shaped, 4 drawer, with retractable keyboard tray	1
	Black metal filing cabinet, 4 drawer, legal	1
	Black fabric secretary chair on casters	1
	Brown melamine bookcase, 32"x12"x31", 2 shelves	1
	Waste paper basket	1
	Everstar oscillating portable heater	1
	Black metal pedestal coat rack	1
	Brown melamine bookcase, 36"x12"x48", 3 shelves	1
	Corkboard, 36"x24"	1
2ND FLOOR / 8 - LAB OFFICE		
	Grey fabric executive armchair on casters	1
	Yellow & grey foldable stool	1
	Maple melamine computer desk, 48"x28"	1
	Oak melamine bookcase, 36"x12"x48", 4 shelves	1
	Black vinyl & chrome stool on casters	1
	Wall mounted, white wooden cabinets, 35"x12"x30", 2 shelves	2
	Beige metal filing cabinet, 4 drawer, legal	1
	Maple melamine cabinet, 32"x16"x64", 2 door	1
2ND FLOOR / 9 - LAB		
	Maple melamine desk, 60"x30", 3 drawer	
	Assorted chairs and stools	9
	Assorted filing cabinets, 4 drawer, legal	3
	Assorted filing cabinets, 4 drawer, lateral	2
	Black plastic kick step	
	Waste paper basket	
	Assorted melamine bookcases	4
	Ridgid wet/dry vacuum, 2.5HP, 22.5L	
2ND FLOOR / 11 - LAB OFFICE		
	Brown metal filing cabinet, 4 drawer, lateral	1

LOCATION/ROOM	DESCRIPTION	QTY
	Black fabric secretary's chair on casters	1
	Black fabric armchair on casters	1
	Black fabric highback armchair on casters	1
	Super 12" oscillating fan	1
	Black metal pedestal coat rack	1
	Waste paper basket	1
	Brown melamine workstation, L-shaped, 4 drawer	1
	Maple melamine bookcase, 36"x12"x48", 3 shelves	1
	Corkboard, 36"x24"	1
	Wall mounted map of Canada, 46"x32"	1
2ND FLOOR / 13 - LAB		
	Assorted chairs and stools	6
	Maple melamine computer unit on casters, 47"x24"x32", 2 shelves, 2 retractable trays	1
	Grey metal worktables on casters, 60"x30"	2
	Beige metal cabinets, 2 door	2
	Waste paper basket	1
	Beige metal multi-media cart, 4 tier	1
	Wall mounted fire-blanket casing with blanket	1
	Beige metal wall-mounted cabinets, 2 glass doors	2
2ND FLOOR / 14 - HALLWAY		
	Maple melamine printer unit, 32"x20"x31"	1
	White melamine cabinet, 2 door, 45"x20"x80"	1
2ND FLOOR / 15A		
	Wall mounted, beige metal storage cabinet, 47"x12"x36", 3 shelves, w/2 glass doors	1
	Pedestal coat rack	1
	Maple melamine computer desk, 30"x29"x29", 2 shelves	1
	Coleman camping cooler	1
	Blue fabric armchair on casters	1
	Brown melamine & chrome table, 60"x30"	1
	Grey and black melamine table, 60"x30"	1
	Assorted beige metal hanging folder carts	2
	Waste paper baskets	2
	White vinyl stool on casters	1
	Brown melamine credenza, 66"x20"x29", 4 drawer, 2 door	1
2ND FLOOR / 15B		
	Dry-erase whiteboard, 36"x24"	1
	Waste paper basket	1
	Dark brown melamine credenza, 60"x18"x32", 3 drawer, 3 door	1
	Black fabric highback armchair on casters	1
	Black fabric secretary chair on casters	1
	Black fabric armchairs on casters	2
	Black metal desktop lamp	1
	Plastic floor protector	1
	Brown melamine workstation, L-shaped, 2 drawer	1
	Artificial plant	1
	Brown melamine bookcase, 30"x12"x69", 5 shelves	1
2ND FLOOR / 15C - OFFICE		
	Light brown melamine computer desk, 48"x24"x30", 1 door	1
	Maple melamine bookcase, 29"x12"x27", 2 shelves	1
	Beige metal filing cabinet, 4 drawer, lateral	1

LOCATION/ROOM	DESCRIPTION	QTY
	Waste paper basket	1
	Caramel melamine desk, 48"x24", 2 drawer	1
2ND FLOOR / 16A - OFFICE		
	Beige fabric highback armchairs on casters	3
	Corkboard, 24"x18"	1
	Whiteboard, 72"x48"	1
	Chrome pedestal coat rack	1
	Brown melamine bookcase, 37"x12"x48", 4 shelves	1
	Waste paper basket	1
	Rona oscillating portable heater	1
	Brown melamine J-shaped desk, 2 drawer	
2ND FLOOR / 16B - OFFICE		
	Beige fabric armchair on casters	1
	Brown vinyl armchair on casters	1
	Maple melamine bookcase, 36"x12"x47", 3 shelves	1
	Wall mounted pigeon-hole cabinet, 46"	1
	Corkboard, 24"x18"	1
	Maple melamine workstation, V-shaped	1
	Maple melamine storage unit on casters, 2 drawer	1
	Waste paper basket	1
	Maple melamine computer stand on casters, adjustable, w/keyboard table	1
	Blue fabric executive armchair on casters	1
	Maple melamine bookcase, 16"x13"x52", 4 shelves	1
2ND FLOOR / 17A - OFFICE		
	Burgundy melamine bookcase, 28"x12"x72", 5 shelves	1
	Waste paper basket	1
	Plastic plant pot	1
	Black fabric executive armchair on casters	1
	Maple melamine workstation, J-shaped	1
	Maple melamine storage unit on casters, 2 drawer	1
	Corkboard, 24"x18"	1
	Super 12" oscillating fan	1
	Dry-erase whiteboard, 36"x24"	1
2ND FLOOR / 17B - OFFICE		
	Grey fabric highback armchair on casters	1
	Brown metal filing cabinet, 4 drawer, lateral	1
	Burgundy melamine workstation, L-shaped, 4 drawer	1
	Waste paper basket	1
	Black metal desktop lamp	1
	Corkboard, 24"x18"	1
	Black fabric highback armchair on casters	1
	Grey metal cabinet, 36"x18"x65", 2 door, 2 drawer	1
	Holmes 12" oscillating fan	1
	White metal filing cabinet, 4 drawer, lateral	1
	Light brown melamine storage unit on casters, 2 drawer	1
2ND FLOOR / HALLWAY		
	Beige metal storage cabinet, 36"x20"x42", 2 door	1
	Beige metal filing cabinet, 4 drawer, lateral	1
	Wall mounted first aid kit	1
2ND FLOOR / 18 - OFFICE		
	Brown metal filing cabinet, 4 drawer, lateral	1

LOCATION/ROOM	DESCRIPTION	QTY
	Pink fabric armchairs on casters	2
	Pink fabric visitor's armchair	1
	Brown melamine bookcases, 36"x12"x48", 3 shelves	2
	Maple melamine meeting table, 36"x36"	1
	Waste paper basket	1
	Corkboard, 36"x24"	1
	Brown melamine desk, 72"x36", 2 drawer	1
	Maple melamine storage unit on casters, 2 drawer	1
	Brown vinyl highback armchair on casters	1
	Beige metal filing cabinet, 2 drawer, lateral	1
2ND FLOOR / 19A - OFFICE		
	Assorted metal filing cabinets, 4 drawer, lateral	7
	Maple melamine bookcase, 36"x12"x42", 3 shelves	1
	Super 12" oscillating fan	1
	Beige metal cabinet, 36"x18"x72", 2 door	1
2ND FLOOR / 19B - OFFICE		
	Brown melamine bookcase, 36"x12"x71", 5 shelves	2
	Burgundy melamine meeting table, 42" dia	1
	Black fabric executive armchair on casters	1
	Black vinyl & leather executive armchair on casters	1
	Burgundy & grey melamine desk, 72"x30"; w/return 72"x20", 2 drawer; and hutch, 4 door	1
	Corkboard, 36"x24"	1
	Waste paper basket	1
	Beige metal filing cabinet, 4 drawer, lateral	1
	Dry-erase white board / planner, 36"x24"	1
	QuietCare humidifier	1
2ND FLOOR / 20 - OFFICE		
	Black vinyl armchairs	4
	Black fabric highback armchair on casters	1
	Burgundy melamine meeting table, 48" dia.	1
	Burgundy melamine bookcases, 35"x12"x65", 5 shelves	3
	Waste paper basket	1
	Black vinyl executive armchair on casters	1
	Burgundy melamine desk, 72"x36", 4 drawer; w/return 72"x20", 2 drawer	1
	Burgundy melamine credenza, 72"x20", 2 drawer, 2 door	1
	Corkboard, 36"x24"	1
	Dry-erase whiteboard, 72"x48"	1
	Homestyles 10" desktop tower fan	1
2ND FLOOR / 21 - PHOTOCOPY ROOM		
	Gardex beige metal fire-resistant filing cabinet, 4 drawer, lateral	1
	Burgundy melamine bookcase, 5 shelves, 30"x12"x71"	1
	Beige metal storage unit on casters, 2 drawer	1
	Wall mounted, maple melamine bookcase, 2 shelves, 28"x12"x26"	1
	Beige metal fire-resistant filing cabinet, 3 drawer, lateral	1
	Waste paper basket	1
	Boston paper cutting board	
2ND FLOOR / 22A - OFFICE		
	Dry-erase whiteboard, 48"x36"	1
	White metal filing cabinet, 4 drawer, lateral	1
	Maple melamine bookcase, 5 shelves, 35"x12"x71"	1
	Maple melamine bookcases, 2 shelves, 28"x12"x27"	2
	Waste paper basket	1

LOCATION/ROOM	DESCRIPTION	QTY
	Corkboard, 36"x24"	1
	Maple melamine workstation, J-shaped, 5 drawers	1
	Beige fabric armchair on casters	1
2ND FLOOR / 22B - STORAGE/ARCHIVES		
	Wall mounted, white wooden cabinet 47"x24"x12", 2 shelves	1
	Beige metal filing cabinets, 4 drawer, lateral	3
	Beige metal filing cabinet, 2 drawer, lateral	1
	Desktop lamp	1
	Section of grey/green metal shelving, 48"x18"x79", 4 shelves	1
	White metal step ladder, 2 steps	1
2ND FLOOR / 23 - SERVER ROOM		
	Super 12" oscillating fan	1
	Wall mounted key-storage box	1
	White melamine computer unit, 24"x24"x50", 3 shelves, and retractable keyboard tray	1
	Maple melamine bookcase, 2 shelves, 28"x12"x27"	1
	White plastic step ladder, 2 steps	1
	Fujitsu wall mounted A/C unit model: Halcyon	1
	Beige fabric, steno chair on casters	1
2ND FLOOR / 24 - OFFICE		
	Beige metal filing cabinet, 4 drawer, lateral	1
	Natural potted plant	1
	Grey and pink fabric armchair on casters	1
	Maple melamine coffee table, 24"x24"	1
	Corkboard, 36"x24"	1
	Brown melamine desk, 72"x35", 5 drawers	1
	Grey fabric highback armchair on casters	1
	Waste paper basket	1
	Grey fabric steno chair on casters	1
	Brown melamine bookcase, 4 shelves, 36"x12"x54"	1
	Brown melamine bookcase, 5 shelves, 36"x12"x71"	1
2ND FLOOR / 25 - OFFICE		
	Maple melamine bookcase, 3 shelves	1
	Beige metal filing cabinet, 4 drawer, lateral	1
	Maple melamine workstation, J-shaped, with retractable keyboard tray	1
	Maple brown melamine storage unit on casters, 2 drawer	1
	Waste paper basket	1
	Wooden bookcase, 4 shelves, 30"x10"x69"	1
	Brown melamine bookcase, 4 shelves, 36"x12"x54"	1
	Corkboard, 48"x36"	1
	White desktop lamp	1
2ND FLOOR / 26 - OFFICE		
	Brown metal filing cabinet, 4 drawer, lateral	1
	Maple melamine bookcase, 4 shelves, 16"x12"x52"	1
	Waste paper basket	1
	Rona oscillating portable heater	1
	Stainless desktop lamp	1
	Maple melamine workstation, J-shaped	1
	Maple melamine storage unit on casters, 3 drawer	1
	Dry-erase whiteboard, 48"x36"	1
	Assorted metal filing cabinets, 4 drawer, legal	2
	Blue fabric armchair on casters	1
	Black fabric steno armchair on casters	

LOCATION/ROOM	DESCRIPTION	QTY
2ND FLOOR / 26A - CUBICLES		
	Assorted pink fabric cubicle wall panels	7
	Maple melamine printer cabinet, 24"x19"x30", 2 shelves	1
	Maple melamine storage unit, 48"x21"x30", 2 shelves	1
	IBM electric type writer	1
	Maple melamine computer desks, 48"x29"	2
	Fellows footrest	1
	Maple melamine printer unit on casters, 24"x20"	1
	Waste paper baskets	2
	Maple melamine computer desk, 36"x29", 2 tier	1
	Maple melamine bookcase, 31"x12"x71", 5 shelves	1
2ND FLOOR / 27 - OFFICE		
	Waste paper basket	1
	Beige metal filing cabinet, 4 drawer, lateral	1
	Pink fabric armchair on casters	1
	Brown wooden desk, 5 drawer, 72"x36"	1
	Black metal office cart	1
	Classic electric space heater	1
	Grey fabric highback armchair on casters	1
2ND FLOOR / 28 - KITCHEN		
	Grey plastic commercial garbage bin	1
	White melamine cabinet, 2 door	1
	Burgundy & black chairs	20
	Burgundy melamine tables, 30"x30"	5
	Momentum water cooler	1
	Corkboard, 48"x36"	1
	Carrier A/C unit	1
	Assorted picture frames	3
	Natural potted plant	1
	White plastic cart, 2 level	1
	Corkboard, 72"x48"	1
	Sylvania stainless steel micro-wave oven	1
	Admiral domestic refrigerator, 17'cu, 2 door	1
	Black & Decker toaster	1
	Black & Decker toaster-oven	1
	Magnasonic stainless steel micro-wave oven	1
	GE Medallion Potscrubber II built-in dishwasher	1
	Betty Crocker electric kettle	1
	Wall clock	1
	Lot of assorted tableware and dishware	1
1ST FLOOR / HALLWAY		
	Maple melamine computer/printer unit, 24"x20"x27", 1 shelf	1
	Assorted melamine bookcases	3
	Beige metal filing cabinets, 4 drawer, lateral	2
	Beige metal cabinets, 36"x18"x72", 2 door	2
	Beige metal cabinets, 36"x18"x40", 2 door	6
	Beige metal filing cabinet, 3 drawer, lateral	1
1ST FLOOR / 30A - OFFICE		
	Assorted armchairs	6
	Black vinyl highback armchair on casters	1
	Corkboard, 36"x24"	1
	Maple melamine desk, 60"x30", 2 drawer	1

LOCATION/ROOM	DESCRIPTION	QTY
	Maple melamine storage unit on casters, 2 drawer	1
	Waste paper basket	1
	Dry-erase whiteboard, 24"x18"	1
	Corkboard, 48"x36"	1
	Maple melamine bookcase, 36"x12"x54", 4 shelves	1
	Maple melamine bookcase, 36"x12"x71", 5 shelves	1
	Black metal desktop lamp	1
	Beige metal filing cabinet, 4 drawer, lateral	1
1ST FLOOR / 30B - OFFICE		
	Waste paper basket	1
	Beige fabric armchair on casters	1
	Beige metal cabinet, 36"x20"x72", 2 door	1
	Beige metal filing cabinet, 4 drawer, lateral	1
	Burgundy melamine bookcase, 36"x12"x72", 6 shelves	1
	Maple melamine workstation, J-shaped	1
	Maple melamine storage unit on casters, 2 drawer	1
	Corkboard, 36"x24"	1
	Black vinyl & leather executive armchair on casters	1
1ST FLOOR / 30C - OFFICE		
	Assorted chairs	4
	Waste paper basket	1
	Maple melamine printer table, 30"x29"x29"	1
	White metal filing cabinet, 4 drawer, lateral	1
	Maple melamine desk, 48"x29"	1
1ST FLOOR / 46 - ENTRANCE		
	Canon photocopier model: NP6050, s/n NDK 42574	1
	Waste paper basket	1
	Paper cutting board	1
	White melamine bookcase, 22"x14"x42", 3 shelves	1
	White melamine printer unit, 24"x19"x29"	1
1ST FLOOR / 55 - CUBICLES		
	Sections of beige metal lockers, 3 door	3
	Waste paper basket	1
	Water cooler	1
	Beige metal filing cabinet, 4 drawer, lateral	1
	Moulinex electric kettle	1
	Beige melamine bookcase, 15"x12"x54", 3 shelves	1
	Assorted pink fabric cubicle wall panels	10
	Assorted maple melamine desks	6
	Assorted chairs	6
	Assorted waste paper baskets	5
	Maple melamine storage unit on casters, 2 drawer	1
	Maple melamine bookcase, 34"x16"x30", 2 shelves	1
	Black metal multi-media cart	1
	Black metal and chrome pedestal lamp	1
	Grey melamine computer unit on casters	1
	Beige metal cabinets, 36"x18"x72", 2 door	3
	Beige metal filing cabinets, 4 drawer, letter	1
	Airworks 9" electric fan	1
	White metal filing cabinet, 4 drawer, lateral	1
1ST FLOOR / 55 - QUALITY CONTROL		
	Assorted chairs	2

LOCATION/ROOM	DESCRIPTION	QTY
	Black metal pedestal coat rack	1
	Maple melamine bookcases, 20"x12"x54", 4 shelves	1
	White metal filing cabinet, 4 drawer, legal	1
	Waste paper basket	1
	Corkboards, 36"x24"	2
	Monthly planner / dry-erase whiteboard, 36"x24"	1
	Assorted maple melamine desks	2
	Wooden table, 48"x32"	1
	Honeywell oscillating 15" pedestal fan	1
	Wooden storage unit, 3 drawer	1
1ST FLOOR / 56 - OFFICE		
	Assorted chairs	3
	Brown melamine bookcases, 32"x12"x69", 5 shelves	2
	Beige metal cabinets, 36"x18"x72", 2 door	2
	Maple melamine computer desk, 36"x29"x29"	1
	Dry-erase white board 36"x24"	1
	Maple melamine workstation, V-shaped	1
	Maple melamine storage unit on casters, 2 drawer	1
	Waste paper basket	1
	White melamine printer unit, 24"x19"x29"	1
	Dry-erase white board 48"x36"	1
1ST FLOOR / 57 - OFFICE		
	Maple melamine bookcases, 34"x16"x29", 2 shelves	3
	Brown metal filing cabinet, 4 drawer, lateral	1
	Brown metal filing cabinets, 3 drawer, lateral	2
	Corkboard, 48"x36"	1
	Assorted chairs	7
	Assorted grey plastic, foldable tables	2
	Assorted waste paper baskets	2
	Maple melamine desk, 60"x30", 3 drawer	1
	Assorted maple melamine computer units	2
	Oak melamine bookcases, 36"x12"x72", 5 shelves	2
1ST FLOOR / 58 - OFFICE		
	Maple melamine bookcases, 36"x12"x70", 5 shelves	1
	Assorted chairs	6
	Maple melamine desk, 60"x30", 3 drawer	1
	Maple melamine storage unit on casters, 2 drawer	1
	Blue metal storage cart, 32"x16"x27"	1
	Corkboard, 24"x18"	1
1ST FLOOR / 59 - OFFICE		
	Maple melamine desk, 60"x30", 4 drawer	1
	Maple melamine storage unit, 2 drawer	2
	Beige fabric armchairs on casters	1
	Waste paper baskets	2
	Grey fabric highback armchair on casters	1
	Beige metal cabinet, 36"x18"x72", 2 door	2

LOT 2
COMPUTER EQUIPMENT

ADALTIS INC. (10900 HAMON)

COMPUTER EQUIPMENT

LOCATION/ROOM	DESCRIPTION	MODEL	SERIAL NUMBER	QTY
2ND FLOOR / RECEPTION				
	Netgear wireless firewall router	WGT624v2		1
2ND FLOOR / 2A - OFFICE				
	Microsoft USB webcam	LifeCam VX-3000		1
	USB webcam			
2ND FLOOR / 2B - OFFICE				
	Acer 17" LCD monitor	AL1716		1
	Keyboard and mouse			1
	HP Compaq micro-tower computer	dc5100MT	CAC602015F	1
	HP laser printer	LaserJet 1012		1
	Linksys 4-port print server	PSUS4		1
	Targus USB business card scanner			1
2ND FLOOR / 3A				
	Keyboard and mouse			1
	NEC 15" LCD monitor	Multisync LCD 1550V		1
	HP Compaq computer micro-tower	dc7700	CAC63900H3	1
	HP laser printer	LaserJet 1320n		1
2ND FLOOR / 4 - CUBICLES				
	Dell 17" LCD monitor	D1226H		1
	Compaq 17" monitor	7550		1
	Keyboard			1
	IBM computer tower	Netvista 6350FU	KATHGR9	1
2ND FLOOR, LAB / 5				
	LG 17" LCD monitor	Flatron L1751S		1
	Keyboard and mouse			1
	Compaq micro-tower computer	EVO D300v	7P29KKM3K00E	1
	Logitech headset			1
	Compaq 17" monitor	7550		1
	Keyboard and mouse			1
	HP Compaq micro-tower computer	dc5100 MT	CAC60604G1	1
	Logitech headset			1
	Labtech headset			1

LOCATION/ROOM	DESCRIPTION	MODEL	SERIAL NUMBER	QTY
	Linksys 5-port network hub			1
2ND FLOOR, LAB / 6A				
	Viewsonic 17" monitor	Q71		1
	Mouse			1
	Compaq laptop computer	Armada 7800	N/A	1
	Labtech headset			1
	HP laser printer	LaserJet 2300n		1
2ND FLOOR, LAB / 6B				
	Optiquest 17" LCD monitor	Q7		1
	Keyboard and mouse			1
	Compaq tower computer	EVO D510CMT	USU4050B8J	1
	Logitech headset			1
	Epson printer	FX-1180+		1
	Epson printer	FX-86e		1
	Keyboard			1
2ND FLOOR, LAB / 7				
	LG 17" LCD monitor	Flatron L1750SQ		1
	Keyboard and mouse			1
	Dell tower computer	dimension 2400	1HBZM41	1
2ND FLOOR, LAB / 8				
	LG 17" monitor	Studioworks 700S		1
	Keyboard and mouse			1
	HP Compaq micro-tower computer	dx2000MT	MXD615006X	1
2ND FLOOR, LAB / 11				
	LG 17" LCD monitor	Flatron L1751S		1
	Keyboard			1
	Linksys 5-port switch			1
2ND FLOOR / 13				
	HP inkjet printer	DeskJet 3550		1
	HP inkjet printer	DeskJet 5652		1
	Lot of assorted computers (10 computers; spare, parts, and/or degraded)			1
	HP inkjet printer	DeskJet 3820		1
	HP scanner	ScanJet 5590		1
	HP laser printer	LaserJet 1300n		1
	HP scanner	ScanJet ADF		1
	Compaq laptop	Armada		1

LOCATION/ROOM	DESCRIPTION	MODEL	SERIAL NUMBER	QTY
	Lot of assorted and various computer peripherals and parts, such as: keyboards (approx 10), mouse (approx 8), laptop docking stations (5), cables, HDD's, ...			1
2ND FLOOR / 14A				
	Lot of assorted printers (16 printers)			1
	Lot of assorted computer monitors (22 monitors)			1
	Lot of assorted computers (11 computers; spare, parts, and/or degraded)			1
	Lot of assorted spare parts			1
2ND FLOOR / 15B				
	Viewsonic 15" LCD monitor	Viewpanel VE150		1
2ND FLOOR / 15C				
	HP Compaq computer tower	dc5100MT	CAC608030M	1
	Compaq 17" monitor	V710		1
	Keyboard and mouse			1
	HP Compaq computer micro-tower	d220m	MXD3390FMB	1
	Compaq computer tower	EVO D510CMT	USW40302Q7	1
	Viewsonic 17" monitor	Q71		1
2ND FLOOR / 16A				
	HP Compaq desktop computer	dc5100 SFF	CAC53400LD	1
	Hyundai 17" LCD monitor	ImageQuest L70B		1
	Keyboard and mouse			1
	HP inkjet printer	DeskJet 6122		1
2ND FLOOR / 16B - OFFICE				
	Cyber Acoustics multi-media speakers (pair)			1
2ND FLOOR / 17A - OFFICE				
	Mouse			1
	Labtek headset			1
	HP laser printer	LaserJet 1320n		1
2ND FLOOR / 17B - OFFICE				
	LG 17" LCD monitor	Flatron L1710S		1
	Keyboard and mouse			1
	Linksys 5-port switch			1
	HP laser printer	LaserJet 4000N		1
	HP Compaq micro-tower computer	dc5100MT	CAC61000W3	1

LOCATION/ROOM	DESCRIPTION	MODEL	SERIAL NUMBER	QTY
2ND FLOOR / 18				
	HP laser printer	LaserJet 1012		1
	Logitech headset			1
2ND FLOOR / 19B				
	LG 17" LCD monitor	Flatron L1751S		1
	Keyboard and mouse			1
	Logitech multi-media speakers (pair)			1
	Linksys 5-port switch			1
2ND FLOOR / 20				
	HP laser printer	LaserJet 1012		1
	Publipac USB cup warmer			1
	HP laptop docking station			1
	Compaq 17" LCD monitor	1720		1
	Keyboard and mouse			1
	Linksys 5-port switch			1
	Mouse			1
	Palm pilot	Tungsten T3		1
	HP Compaq laptop	nx9030	CNF4463BWZ	1
2ND FLOOR / 22A				
	NEC 15" LCD monitor	MultiSync LCD 1555V		1
	Keyboard and mouse			1
	HP Compaq computer tower	d530 SFF	CAC44900CC	1
	Linksys 5-port switch			1
	Netgear 4-port hub			1
2ND FLOOR / 22B				
	HP Compaq laptop	nc8230	CNU5330F1J	1
	HP Compaq laptop	nx7010	CND452176Z	1
	HP Compaq laptop	nx9110	CND4300BC9	1
2ND FLOOR, SERVER ROOM / 23				
	3Com 12-port hub	3C16271		1
	Compaq inkjet printer	IJ200		1
	Sastema black metal LAN rack			1
	HP server	Proliant ML370	USE609N6V7	1
	HP tape drive	StorageWorks Ultrium 960		1
	Tripp Lite UPS	Smart Pro		1
	Keyboard			1
	HP server	Proliant ML350	M011LK83IT	1

LOCATION/ROOM	DESCRIPTION	MODEL	SERIAL NUMBER	QTY
	Grey melamine/black metal computer workstation, 60"x30"x87", with 2 adjustable shelves			1
	HP server	Proliant ML370	D146FRT1K094	1
	IBM server	xSeries 220	78-Y2310	1
	HP Compaq server	Proliant ML370	D031FD81K401	1
	Compaq server	Proliant 1600	D926CSD1A651	1
	KDS 14" monitor			1
	TUM 14" monitor	LR4Dc		1
	Keyboards			4
	Mouse			2
	Linksys 5-port switch			3
	APC battery back-up	800RT		1
	Compaq UPS			1
	HP inkjet printer	DeskJet 5650		1
	Dlink kvm switch			1
	Ortronics 24-port patch panels			2
	3Com 24-port switches			3
2ND FLOOR / 25				
	Samsung 15" LCD monitor	SyncMaster 570V TFT		1
	HP 17" monitor	7500		1
	HP Compaq desktop computer	d530 SFF	CAC44900CD	1
	Keyboard and mouse			2
	Compaq computer tower	EVO D510CMT	USW40302NZ	1
	Desktop computer mic			1
2ND FLOOR / 26				
	HP Compaq desktop computer	d530USDT	CAC42500DH	1
	Samsung 15" LCD monitor	SyncMaster 570 TFT		1
	Keyboard and mouse			1
2ND FLOOR / 27				
	Mouse			1
	Compaq 17" LCD monitor	1720		1
1ST FLOOR / 29				
	KDS 14" monitor			1
	Compaq computer tower	DeskPro EN	6Y19-DYSZ-W09X	1
1ST FLOOR / 30A				
	Keyboard and mouse			1

LOCATION/ROOM	DESCRIPTION	MODEL	SERIAL NUMBER	QTY
	Compaq 17" monitor	7550		1
	Keyboard and mouse			1
	HP computer tower	dc5100MT	CAC60604G4	1
	HP laser printer	LaserJet 1012		1
	Linksys print server	PSUS4		1
	Plantronics headset			1
1ST FLOOR / 55				
	HP Compaq computer tower	dx2000MT	MXD61001LS	1
	Keyboard and mouse			1
	Viewsonic 17" monitor	E771		1
	Linksys 5port switch			1
	Compaq computer tower	DeskPro EN	6Y19-DYSZ-W099	1
	Compaq 17" monitor	7550		1
	Keyboard and mouse			1
	Compaq computer tower	DeskPro	6Y19-DYSZ-R01M	1
	LG 17" monitor	Studioworks 700S		1
	Keyboard and mouse			1
	Compaq computer tower	DeskPro EN	6Y19-DYSZ-R049	1
	KDS 17" monitor	XFLAT		1
	HP laser printer	LaserJet IIP		1
	Keyboard and mouse			1
	Linksys 5port hub			1
1ST FLOOR / 56				
	Compaq computer tower	DeskPro	6817-BYNS-R255	1
	Compaq 15" monitor	V50		1
	Keyboard and mouse			1
	Astro-Med inc. label printer	Top Hand 2		1
1ST FLOOR / 57				
	Dell computer tower	Dimension XPS R450	GYBS6	1
	elo Touchsystems 15" monitor	Entuitive Touchmonitor		1
	US Robotics 33.6 faxmodem			1
	Dell 17" monitor	Trinitron		1
	Keyboards			2
	Mouse			2
1ST FLOOR / 58				
	Compaq desktop computer	EVO D51S	USH3130FSZ	1
	Compaq computer tower	N/A	6Y19-DYSZ-R03W	1

**LOT 3
SERVERS**

Adaltis Inc.

Equipment Located at Verizon Montreal

(630 René-Lévesque)

LOCATION/ROOM	DESCRIPTION	MODEL	SERIAL NUMBER	QTY
Verizon Montreal				
	IBM Management Console	7310-C03	10-7590A	
	IBM i550 Server	9406-550	10-1257C	
	IBM Expansion Tower	5095	10-5877D	
	IBM Expansion Tower	5095	10-9737D	
	IBM Storage	3581-L28	78-A7333	
	IBM External Drive	7210-B01	10V1636	
	IBM Tape Drive	3573-C3S	78H1406	
	IBM Tape Drive	3580-L23	13-37812	
	3Com 24 Port Switch	3C16471	0101/LV5G2Z0128516	
	Tripp-Lite KVM SWITCH	CS-104U	9513AZB006004R0071	
	Tripp-Lite Rack Monitor	B021-000-17	AGCB5877	
	Cisco Firewall	Pix		
	Dell Server	PE 2950	DTM1BG1	

LOT 4
LABORATORY & SCIENTIFIC EQUIPMENT

ADALTIS INC. (10900 HAMON)

LABORATORY EQUIPMENT

LOCATION/ROOM	DESCRIPTION	QTY
2ND FLOOR / 8 - LAB OFFICE		
	Calibrated white marble table, 24"x35"x32"	1
	Denver Instruments digital scale with glass compartment, s/n 2300 9263	1
2ND FLOOR / 9 - LAB		
	Hawes Corp stainless steel pedestal emergency eye-wash station and shower	1
	Eaton Viking beige domestic upright freezer, 1 door, s/n 860988519	1
	Sanyo VIP series ultra-low temperature freezer model: MDF-V7NVIP, s/n 20607402	1
	Stainless steel sink/basin, 72"x28"x37"	1
	Barnstead NANOpure II filtration system, with Barnstead Sybron megohm-cm s/n 8702203, and Millipore filtration system	1
	Biolab water purification system, 4 valves	1
	Manufacturer unknown filter, with tubes and valves	1
	Kelvinator domestic lateral freezer model: CA18W, s/n 8803031634	1
	Stainless steel utility cart, 3 tier	1
	Frigidaire commercial freezers model: FFU2124DW1	2
	Beige metal cabinets, 47"x16"x84", 4 glass doors, 6 shelves	2
	Wall mounted, beige metal cabinet, 47"x12"x36", 3 shelves, 2 glass doors	1
	Powerware 9120 battery back-up	4
	Amersham Biosciences AKTA FPLC chromatographic system consisting of: UPC-900, P-920, INV-907, M-925, Frac-950, and IV-908; with HP Compaq computer tower model: d530C, s/n n/a, Hyundai 17" LCD monitor model: L70B; keyboard and mouse, and HK multi-media speakers (pair)	1
	Fisher Scientific IsoTemp hot plate/magnetic stirrer model: 210, s/n 807N0730	1
	VWR Symphony pH meter model: SB70P, s/n 004988	1
	Fisher Scientific IsoTemp hot plate/magnetic stirrer, s/n 1619060431851	1
	Shimadzu electronic scale type: BX-420N, s/n D434700096, 420g cap	1
	Stainless steel utility cart, 3 tier	1
	Labnet digital microcentrifuge model: Spectrafuge 24D, s/n D403113	1
	Labnet digital microcentrifuge model: Spectrafuge 24D, s/n D308358	1
	Corning magnetic stirrer model: PC-310	1
	Fisher Scientific bench-top, fixed speed centrifuge model: Centrifuc 228	1
	Labnet vortex mixer model: VX100, s/n 30123023	1
	Lot of assorted temperature loggers (18)	1
	Butane torch	1
	Eppendorf repeater plus pipettor	1
	Hoefler electrophoresis unit model: Mighty Small II SE250-10A-15, s/n 20015171	1
	Hoefler vertical gel electrophoresis unit model: Mighty Small SE245 dual gel	1
	Lab Conco semi-dry blotting system model: IMM-1-A, s/n 11658	1
	Decosonic vacuum seal model: KIC 828	1
	Porta-Truce color correct lamp, 12"x10", 5000k	1
	Tube rotator	1
	Fisher Scientific vortex mixer, s/n 060221032	1
	Integra Biosciences pipetboy	1
	True commercial refrigerator, 2 tempered glass doors, model: GDM-47, s/n 1-3583945, 54"x29"x78"	1
	Danby Silhouette win cellar model: DWC612BLP, s/n 0104090200186	1

LOCATION/ROOM	DESCRIPTION	QTY
	Asys microplate reader model: Expert 96, s/n 25476; with Compaq computer model: D5S, s/n P0FG; LG 17" monitor; keyboard and mouse; and APC battery back-up model: RS 1500	1
	VWR rotate stock traceable units	6
	Lot of assorted timers and/or alarms	1
	Eppendorf repeater plus pipettor	1
	Lot of assorted pipettes (approx 20)	1
	Nuaire Labgard biological safety cabinet (hood) model: NU-425-600, s/n 24291 XM, with stand	1
	Fisher Scientific vortex mixer, s/n 060220015	1
	Labnet vortex mixer model: VX100, s/n 30123050	1
	Bio-Rad multi casting chamber model: Mini PROTEAN, 3 cell, s/n 525BR046212	1
	Labnet mini centrifuge model: Spectrafuge C1301, s/n 02090622	1
	Jencons powerpette plus	1
	AIE impulse sealer model: AIE-200	1
	Bio-Tek microplate washer model: ELX 405, s/n 205312	1
	Johns Scientific incubator model: 1545, s/n 0103492, 650 W	1
	Baxter S/P vortex mixer, s/n 039841	1
	Labnet vortex mixer model: VX100, s/n 30201007	1
	Labnet vortex mixer model: VX100, s/n 30201006	1
	Corning hot plate / magnetic stirrer model: PC-320	1
	Corning magnetic stirrer model: PC-310	1
	Sanyo CO2 incubator model: IR Sensor, s/n 80402475	1
	Revco Ultima incubator, s/n 1359	1
	Heraeus function line incubator model: 1312, s/n 40306800	1
	Shel-Lab low temperature incubator model: 2005, s/n 1204695	1
	MoistAIR evaporative console humidifier model: MA1200, s/n 07176	1
	Powerware 9120 battery back-up	2
	Fisher Scientific IsoTemp magnetic stirrer s/n 502N0193	1
	Fisher Scientific IsoTemp hot plate/magnetic stirrer s/n 502N0113	1
	Millipore sterility test system model: Steritest II, s/n 446US89	1
	Thomas Industries vacuum pump	1
	Fisher Scientific Genie 2 vortex mixer model: G-560, s/n 2-161423	1
	American Scientific Products vortex mixer model: S8223-1, s/n 025661	1
	Powerware 9120 battery back-up	1
	Cavro pipettor-dilutor model: 1500, s/n 18880	1
	Cavro pipettor-dilutor model: 1500, s/n 19173	1
	Bio-Tek microplate auto-washer model: EL 403, s/n 33633, with Thomas Industries vacuum pump	1
	Bio-Tek pressure delivery module	1
	Life Technologies horizontal gel electrophoresis system model: Horizon 11-14, s/n 00203055	1
	Pharmacia Biotech electrophoresis power supply model: EPS 1000	1
	UVP UV trasilluminator model: M-15E, s/n 091801-002	1
	Powerware 9120 battery back-up	1
	Adaltis NexGen Four, 4 plate automated analyser, s/n 0069; with Fujitsu Siemens desktop model: FHD-D1561, s/n S26361-K667-V402; Viewsonic 17" monitor model: E70; keyboard and mouse; and HP deskjet 5652 printer	1
	Adaltis Personal Lab (plab2), 2 plate automated analyser, model: 0-2875, s/n 1945; with Compaq desktop, s/n 6006-CY62-A491; LG 17" monitor model: 700S; keyboard and mouse	1
	Adaltis Personal Lab (plab1), 2 plate automated analyser, model: 0-2875, s/n 1744; with Compaq desktop, s/n 6015-DFG5-A042; LG 17" monitor model: 700S; keyboard and mouse; and HP deskjet 3550 printer	1
	Nichiryo 8-channel repetitive syringe dispenser model: 8800	1
	Assorted pipettes	6
	Eppendorf digital re-chargeable pipette model: 500, with stand	1

LOCATION/ROOM	DESCRIPTION	QTY
	Calibration test plates	2
	Powerware 9120 battery back-up	1
	Integra Biosciences pipetboy	1
	Sorvall Instruments GS-3 rotor	1
	Sorvall Instruments SS-34 rotor	1
	Sorvall Instruments RC5C rotor, s/n 8703676	1
	Lab-Line force environmental orbit shaker model: 4628, s/n 1298-0478	1
	Bransor digital sonifier model: 450, s/n BI98082280, with 102 converter	1
	Step up & down transformer 110/220V	1
2ND FLOOR / 13		
	VWR International ultrasonic cleaner model: 50T, s/n 01TS31015	1
	Bel-Art Products wall mounted emergency eye-wash station	1
	Labnet Orbit LS low speed shaker model: S-2030LS, s/n 138	1
	Adaltis Labotech automated microplate analyser model: 0-2730-E, s/n 0234; with Compaq Deskpro computer s/n 6838CGQ2J039, Samsung SyncMaster 500S 15" monitor, keyboard and mouse	1
	InterLab automated analyser Microtech 672, 2003	1
	Adaltis NexGen Four, 4 plate automated analyser, p/n 5000, s/n 0024; with HP Compaq micro-tower model: dx2000MT, s/n MXD50202BT; Acer 15" monitor model: AC511; keyboard and mouse	1
	Adaltis Personal Lab, 2 plate automated analyser, model: 0-2875, s/n 1515; with Compaq Deskpro s/n 6931CYH40077; Compaq 17" monitor model: V700; keyboard and mouse	1
	Leitz Laborlux 12 microscope, 2 eyepiece, 5 objective turret, s/n 512647	1
	Adaltis eclecticica, bench top hybrid analyser, s/n 0171	1
2ND FLOOR / 14A - STORAGE		
	Manufacturer unknown (Lory) model: Echo, s/n 2000E100418	1
	Adaltis Eclectica, bench top hybrid analyser, s/n 0235	1
	Thermolyne Locator 4 Plus cryo biological storage system, 120L cap.; with liquid nitrogen monitor	1
	Taylor Wharton CryoPak Series liquid nitrogen shipper model: CP 300; 15.5L	1
	Bio-Tek Instruments microprocessor controlled microplate autowashers model: EL-403	4
	Lab Line Instruments compact laboratory incubators model: 100	2
	MFG Corp. Vacuum pump model: DOA-V155-FB	1
2ND FLOOR / 14B - STORAGE		
	Adaltis Eclectica; bench top hybrid analyser, s/n 0094	1
1ST FLOOR / 29		
	Lot of various and assorted plastic vertical tanks (approx 20)	1
	Lot of various and assorted glass and/or plastic containers and jugs (approx 50)	1
1ST FLOOR / 31		
	Fisher Scientific IsoTemp hot plate / magnetic stirrer	1
	Oyster Bay Pump Works microplate processing conveyor system; 5 microplate stations, control box, 24" dia liquid trap, mounted on 96"x30" stainless steel cart, with supplies drawer	1
	Oyster Bay Pump Works microplate coating and washing conveyor system; with Versafill dispensing machine, mounted on 96"x30" stainless steel cart, with supplies drawer	1
	Imagene Technology Isoflow reagent dispenser, with digital control	2
	Love Controls recording thermometer model: CR10, s/n 03311465	1
	Kinematic Automation universal test strip laminator module model: Matrix 2210	1
	Nuaire Labgard biological safety cabinet (hood) model: NU-425-600, 1989, s/n 18340UN, with stand	1
	Stainless steel utility cart, 3 tier	1
	Blue plastic/stainless steel utility cart	1

LOCATION/ROOM	DESCRIPTION	QTY
	Assorted pumps	2
1ST FLOOR / 31 (A&B)		
	CP Fabien walk-in incubator/quarantine approx 14'x10'x7', 2 rooms (approx 7'x10'x7' each), 2 doors (1 door per room), electrical outlets, lighting, and thermometer's	1
1ST FLOOR / 31 (C)		
	Manufacturer unknown walk-in cold room model: PP-120-12-R, approx 12'x8'x7', dual fan chiller, single door with tempered glass window, lighting, and thermometer	1
1ST FLOOR / 35		
	Lot of assorted polypropylene bottles (11)	1
	Lot of assorted plastic bins, trays, and tupperware (approx 100 large, and approx 100 small)	1
1ST FLOOR / 38		
	Cold Stream refrigerator model: RSCP 48, s/n 86D1856, dual tempered glass doors, top mounted refrigeration, lighting	1
	Sanyo biomedical chest freezer model: MDF-436, s/n 50202247, 1 door, with control panel and alarm	1
	Wood's domestic upright freezer model: V20NAB, s/n 01614444KH, 1 door	1
1ST FLOOR / 37		
	Adaltis Labotech automated microplate analyser model: 0-2730-E, s/n 0060	1
	Lot of replacement & spare parts for various Adaltis models of automats	1
1ST FLOOR / 40B - HALLWAY		
	Orion Research microprocessor pH/millivolt meter 811	1
	Dungey Inc. peristaltic pump model: P10T	1
	Stainless steel utility carts, 3 tier	2
	Sterilite plastic bin on wheels, with lid	1
1ST FLOOR / 40E - FACRICATION		
	Revco Moquin premiere, ultra-low temperature upright locking freezer model: FMU8621AUA, s/n P23B-114539-RB	1
	Stainless steel utility cart, 3 tier	1
	Microzone Corp Bio Klone series II biological containment hood model: BK-2-6 s/n 802-0493, with modular base/support stand, stainless steel interior work surface, face shield, gas outlet & valve, fluorescent lighting, and electrical outlets	1
	Bio-Tek Instruments Bio-kinetics microplate reader model: EL 312, s/n 65892; with IBM desktop computer model: 350-P60, TVM 14" monitor model: AS5D, keyboard and mouse, and Epson FX-850 printer	1
	Lot of Denver Instruments weight kits (500g, 100g, & 5g)	1
	Oakton benchtop pH meter model: pH 510 series, s/n 213788	1
	Bio-Tek Instruments microplate autowasher model: EL404, s/n 128534	1
	Bio-Tek Instruments pressure delivery module, 0-6 PSI max, s/n 622916	1
	Bio-Tek Instruments microplate strip washer model: ELX50 s/n 128442	1
	Heraeus incubator model: B5060E, 70° cap, s/n 8553361	1
	VWR rocking platform model: 100, s/n 04M1222C	1
	Foster double door refrigerator model: PC-25-SG-U, s/n 68-94866, tempered glass doors, with T° Sentry temperature control/alarm model: 125	1
	Assorted pipettes	3
1ST FLOOR / 44		
	Miele stainless steel spindle head laboratory glass-ware dishwasher model: Mielabor G7733, with steel trays and washing racks	1
	Lot of assorted plastic trays (approx 25)	1

LOCATION/ROOM	DESCRIPTION	QTY
	Lot of assorted glass jars, beakers, cylinders... (approx 150)	1
1ST FLOOR / 47		
	Home-made pump with GE motor, AC, 1/4 hp, 1725rpm	1
	Corning hot plate / magnetic stirrer model: PC-520	1
	Corning magnetic stirrer model: PC-510	1
	Thermolyne Nuova II hot plate / magnetic stirrer model: SP18425-13	1
	Thermo Orion 420A+ ph meter; with 2 probes, and 2 stands	1
	Mineralight hand held UV lamp model: UVGL-58; with desktop stand	1
	Branson ultrasonic cleaner model: 3200	1
	Drummond portable pipet-aid XP, s/n 29546	1
	Brinkmann transferpette-12, 12 channel, 50-200ul	1
	Branson ultrasonic cleaner model: 1200	1
	VWR Scientific Products minivortexer model: MV1, 200-2500 rpm	1
	Sartorius R200D - **V40 semi-micro scale, s/n 39040141	1
	Calibrated white marble table, 24"x35"x32"	1
	Brinkmann transferpette-12, 12 channel, 50-200ul	1
	Gilson pipetman	2
	Lot of assorted plastic and/or glass jars, beakers, cylinders, pipettes, test tubes, trays....	1
1ST FLOOR / 48		
	Mettler Toledo digital scale model: PJ1220, s/n JJ1539	1
	Fisher Scientific IsoTemp hot plate / magnetic stirrer, s/n 309N0476	1
	Fisher Scientific IsoTemp hot plate / magnetic stirrer, s/n 306N0263	1
	Corning magnetic stirrer model: PC-510	1
	Home-made pumping and stirring station; wall mounted, with valves, tubing, piping and drill heads; approx 48"x48"	1
	Bel-Art Products wall mounted emergency eye-wash station	1
	Lot of assorted glass cylinders (10)	1
	Millipore Corp. wall mounted water filter; with valves, gauges, and tubing; s/n 13017-C	1
1ST FLOOR / 49		
	Corning magnetic stirrer model: PC-535	1
	MetOne portable air particle counter model: 237A, s/n 940111349A	1
	Oxford Bacti-Cinerator III infrared heat sterilizer, s/n L000148A	1
	Lab Line Instruments Inc. incubator model: 120, s/n 0195-0196	1
	Boekel Scientific incubator model: 133000, s/n 012202641	1
	Corning magnetic stirrer model: PC-310	1
	American Scientific Products vortex mixer, s/n 025654	1
	Thermo Spectronic Genesis 10 UV spectrophotometer, s/n 2L6G127001	1
	Foster Refrigeration refrigerator model: GM-20-G-T, s/n 82331; stainless steel, tempered glass door, top mount self-contained compressor	1
	Revco Freezer, 1 door, with digital temperature control & alarm, and recording thermometer	1
	Cambridge Instruments Galen III professional microscope, s/n 1182BZ, 2 eyepiece, 4 objective turret; with Compaq Prolinea 5150 computer, Viewsonic E655 15" monitor, keyboard and mouse	1
1ST FLOOR / 50		
	Blue M lab oven model: OV-18A, s/n 18A979, 38°C to 288°C	1
	Manufacturer Unknown custom built pressure regulator	1
	Brinkmann bottle top dispensers	2
	Pall Palltronic max pressure barguage model: FFE03-P, s/n AR017	1
	Gilson autosampler model: 222, s/n 108963, with controller and dilutor	1
	Corning magnetic hot plate and stirrer model: PC-351	1

LOCATION/ROOM	DESCRIPTION	QTY
	Cole Parmer Instruments Masterflex controler/dispenser model: 77300-60, with pumping system model: 77300-50	1
	GE motors (1/4 HP, and 1/6 HP)	2
1ST FLOOR / 51		
	Stainless steel L-shaped table, approx 200"x30" & 75"x30", with sink	1
	Cole Parmer Instruments Masterflex L/S digital modular drive model: 77300-80, with pumping system	1
	Stainless steel utility cart, 3 tier	1
1ST FLOOR / 52		
	Stainless steel table, 115"x30", with sink and tap,	1
1ST FLOOR / 53		
	Stainless steel L-shaped table, 110"x30" & 78"x30", with sink	1
	Sartorius assorted tower filters, 125psig@20°C	3
	Assorted glass cylinders	5
1ST FLOOR / 54 - HALLWAY		
	Revco Scientific ultra low temperature, reach-in, upright freezer model: U 1786 A-0-D, s/n YX 75843-3 E, 1 locking door, with temperature controls and recording thermometer	1
1ST FLOOR / 54A		
	Lot of assorted polypropylene bottles and jars (approx 40)	1
	Lot of assorted glass bottles and jars (approx 15)	1
	Metro plastic utility cart, 2 tier	1
1ST FLOOR / 54B - AUTOCLAVE		
	Wall mounted emergency eye-wash station	
	Cole Parmer Instruments standard unified variable-speed drive pump model: Masterflex 7520-25	1
	Lot of assorted polypropylene bottles (approx 40)	1
	Stainless steel utility cart, 2 tier	1
	Blue plastic/stainless steel utility cart, 3 tier	1
	Piccolo ATC pH meter	1
	Amsco Eagle series gravity autoclave/sterilizer model: 2021, 20"x40"x20" interior, with stage 3 controls, digital readout, and printer	1
	Sartorius MD8 air sampler type: SM 16744, s/n 4212864	1
	Revco Scientific ultra low temperature, reach-in, upright freezer model: U 2140 A-0-C, s/n YX 75843-2 F, 1 locking door, with temperature controls and recording thermometer	

LOT 4b)
LAB TABLES AND COUNTERS

ADALTIS INC. (10900 HAMON)

LAB TABLES AND COUNTERS

LOCATION/ROOM	DESCRIPTION	QTY
2ND FLOOR / 5 - LAB OFFICE		
	Grey & blue metal/black melamine-top laboratory counter, 180"x24"x36", 6 drawers, 6 doors, with built-in stainless steel sink and tap	1
2ND FLOOR / 9 - LAB		
	Blue and grey metal/black melamine top lab counter, 8 drawer, 2 door, with electrical outlets	1
	Blue and grey metal/black melamine top lab counter, 96"x48"x36", 4 drawer, 8 door, with electrical outlets, 2 stainless steel doors, with built-in tap and sink, hutch, and electrical outlets	3
	Blue and grey metal/black melamine lab counter, 96"x21"x36", 10 drawer	1
	Blue and grey metal/black melamine lab counter, 60"x23"x36", 7 drawer, 2 door	1
	Blue and grey metal/black melamine lab counter, 96"x48"x36", 8 doors, 4 drawers, with built-in sink and tap, and electrical outlet	1
	Blue and grey metal/blackmelamine lab counter, 39"x30"x36", 2 door, 2 drawer	1
	Blue and grey metal/blackmelamine lab counter, 84"x24"x36", 4 door, 3 drawer, with electrical outlet	1
1ST FLOOR / 50		
	Stainless steel/melamine counter, with sink, 4 door	1
1ST FLOOR / 54B - AUTOCLAVE		
	Beige and blue metal/black melamine lab counter, 42"x24", 2 door, 2 drawer	1

LOT 5
SHOP & PACKAGING EQUIPMENT

ADALTIS INC. (10900 HAMON)

SHOP AND PACKAGING EQUIPMENT

LOCATION/ROOM	DESCRIPTION	QTY
2ND FLOOR / 9 - LAB (10 - FRIDGE)		
	Assorted sections of metal shelving	5
	Section of metal racking 78"x34"x86"	1
	Kickstep	1
2ND FLOOR / 14A - STORAGE		
	Aluminum step ladder, 5 steps	1
	Lot of assorted cleaning supplies (mop bucket, broom, cleaners, etc...)	1
	Philips electric space heater	1
	Section of beige metal shelving, 36"x18"x75"	1
	Waste paper basket	1
	Assorted sections of metal shelving	6
	Green metal strapping cart	1
	Cleanfix industrial vacuum model: SW15	1
	Ferno-Washington aluminum plateform lifting cart	1
	Blue metal utility cart, 3 tier	1
	Steel tank-handling handtruck	1
2ND FLOOR / 14B		
	Assorted sections of shelving	11
	Stainless steel utility cart, 3 tier	1
	Mop bucket and ringer	1
	Wooden step ladder, 7 steps	1
	Lot of assorted pink fabric cubicle wall panels (approx 24)	1
	Lot of Christmas decorations	1
	Biotech humidifier	1
	Assorted filing cabinets, 5 drawer, legal	2
	Green metal filing cabinet, 4 drawer, legal	1
2ND FLOOR / 29 - STORAGE		
	Black metal filing cabinet, 2 drawer, lateral	1
	Brown melamine bookcase 30"x12"x70"	1
	Maple melamine bookcase, 35"x12"x48", 3 shelves	
	Maple melamine desk, 42"x24", 2 drawer	1
	Maple melamine computer desk, 36"x29"	1
	Maple melamine desk, 60"x30", 4 drawer	1
	Beige fabric armchair on casters	1
	Sections of black metal shelving	5
	Assorted grey metal filing cabinets, 4 drawer, legal	2
	Pink fabric armchair on casters	1
	Assorted beige metal cabinets, 36"x12"x40", 2 door	2
	White melamine bookcase, 24"x12"x70", 5 shelves	1
1ST FLOOR / PRODUCTION HALLWAY		
	White melamine unit, 54"x16"x36"	1
	Kick step	1
	Waste paper basket	1
	Wall mounted 1st aid kit	1
1ST FLOOR / 31		
	Grey melamine table on wheels, 72"x36"	1
	Stainless steel tray cart, 30 tray slots	1

LOCATION/ROOM	DESCRIPTION	QTY
	Lot of assorted plastic bins (approx 35)	1
	Wall mounted mirror	1
	Sterillite white plastic laundry basket	1
	White melamine bookcase, 32"x12"x28", 2 shelves	1
	Assorted chairs	4
	Assorted garbage bins	2
	Rubbermaid plastic garbage bin	1
	Honeywell 19" pedestal oscillating fans	2
	Grey plastic folding table, 48"x24"	1
	Lot of assorted camping coolers (5)	1
	Green metal handtruck	1
	Ceiling mounted, hanging plastic lamellar curtain, approx 15'	1
	Audion Electro vacuum sealer model: VM201 AudionVac, s/n 2019072550	1
	Lumar Ideal II inc vacuum sealer model VA-500, 21"x21", s/n 200809611	1
	Azco Corp benchtop SUR-SIZE cut-to-length guillotine assembly model: SM4	1
	Hongzhan PFSA electromagnetic impulse sealer	1
	Section of beige metal shelving	1
	Black melamine table on wheels, 96"x31"	1
	Holmes portable heater	1
1ST FLOOR / 31B		
	Stainless steel tray carts, with custom made microplate trays	5
1ST FLOOR / 31A		
	Stainless steel tray carts, with custom made microplate trays	2
1ST FLOOR / 32 - FRIDGE		
	Sections of metal shelving	10
	Steel fence, approx 12' (L), with door	1
1ST FLOOR / 33 - PRODUCTION STOCK ROOM		
	Black plastic pallets	5
	Sections of metal shelving	2
1ST FLOOR / 34 - MACHINE SHOP		
	Green metal mobile staircase, 6'	1
	Blue wooden and metal shop cart	1
	Waste paper basket	1
	Beige metal cabinet, wall mount, 2 glass doors, 3 shelves, 47"x12"x36"	1
	Lot of assorted tools, equipment, and supplies	1
	Black & Decker 7 1/4" circular saw	1
	Grey fabric secretary chair on casters	1
	Delta 8" table top drill press	1
	No6 bench vice	1
	Plastic chairs	1
	Silver Pro Dura Force 6.5HP lawn mower	1
	5 gallon shop vac	1
	Assorted sections of plastic shelving	2
	Kohler generator model: 20RC0ZN71, 20KW, 25KVA, 1800rpm, 6811.4hrs; engine model: 4TN84TE-RKRV, 28.6-36.3 HP output; on metal base; with ULC aboveground steel fuel tank, 450L cap.	1
	DeVilbiss air compressor model: PD35, s/n 0397-1-9703-73	1
	Blue and black wooden workbench, 3 doors, 8 drawer	1
	EBR paper shredder	1
	ITT air compressor model: SYCTGH91	1
	Wall mounted emergency eye-wash station	1
	Brown metal/black&blue melamine workbench, 4 drawer, 3 door	1

LOCATION/ROOM	DESCRIPTION	QTY
	Assorted sections of metal shelving	1
	Hoover Windtunnel vacuum cleaner, 12A	1
	Bionaire humidifier	1
	Mastercraft duo speed floor buffer	1
1ST FLOOR / 35 - STORAGE		
	Sections of black metal shelving	2
1ST FLOOR / 35A - STORAGE		
	Spill-X chemical spill treatment kit	1
	Assorted sections of shelving	3
	Yellow metal flammables storage cabinet, 43"x19"x66", 1 door	1
1ST FLOOR / 36 - HALLWAY		
	A&H Hi-Flow air compressor model: AH FS B2 H8, s/n 2115	1
	JUCAI air dryer 15 model: JO-15, S/N 4111810	1
	Quincy Compressors air compressor model: QT-15, s/n 20051012-0089	1
1ST FLOOR / 37 - STORAGE/SHIPPING		
	Black metal shelving, 36"x16"x70", 5 shelves	1
	Mover's dollies	2
	Beige and green shelving, 36"x24"x75", 4 shelves	1
	Beige metal cabinet, 2 shelves, 2 glass doors, 47"x12"x36"	1
	Green plastic garbage bin	1
	Shop Vac wet/dry vacuum, 10 gallons, 4.5HP	1
	Section of beige metal lockers, 3 door	1
	Fluke 97 50MHz scopemeter	1
	Assorted sections of metal shelving	3
	White plastic garbage bin	1
	Gold Brand platform scale SP902, 600lbs cap	1
	White melamine bookcase, 2 shelves	1
	Waste pick-up carts	2
1ST FLOOR / 38 - SHIPPING/HALLWAY		
	Pelouze heavy duty electronic utility scale model: 4040, s/n 11327, 400lbs cap, with digital readout	1
	Assorted plastic recycling bins on wheels	2
	Corkboard, 72"x48"	1
	Wrangler 90 jigger s/n 74750, 5500lbs cap.	1
	Blue movers dolly	1
	Metal shovel	1
	Leaf rake	1
	White/black melamine counter, 6 shelves	1
1ST FLOOR / 40 - PACKAGING		
	RBS Equipment Designs Ltd. shrink tunnel model: ACT, 17"x9", 208V, 3 phase, s/n 48-0091; with conveyor speed, and temperature controls	1
	RBS Equipment Designs Ltd. plastic film sealing machine, with conveyor, speed and temperature controls	1
	Charles Lapierre inc. (Cli.) Uni-300 automatic wrap-around pressure sensitive round bottle labeler model: UNI300-S010, s/n 35418GA	1
	Maditra card laminator model: M-1100, s/n C-2214	1
	Assorted chairs and stools	4
	Assorted garbage bins	3
	Holmes 9" oscillating fan	1
	Blue & beige metal/grey melamine cabinet, 2 doors, 1 drawer, 48"x27"	1
	Grey melamine table 48"x26"	1

LOCATION/ROOM	DESCRIPTION	QTY
	Grey melamine table on wheels, 7'x3'	2
	Blue & beige metal/grey melamine cabinet, 10 door, 27 drawer	1
	Lot of custom fabricated stainless steel trays (3 types) for fridges and freezers (approx 75 trays)	1
1ST FLOOR / 40A - HALLWAY		
	White metal cabinets, 2 door	2
	White melamine bookcases, 15"x13"x54", 4 shelves	1
1ST FLOOR / 40B- HALLWAY		
	White melamine bookcases, 26"x19"x54", 3 shelves	2
	Grey plastic cabinet, 2 door	1
	Beige metal cabinet, 2 door	1
	Mover's dollies	5
1ST FLOOR / 40E - QUALITY CONTROL		
	Grey monthly planner/dry erase poster, 36"x24"	1
	Assorted chairs	2
	White melamine bookcase on casters, 32"x17"x38", 2 shelves	1
	Honeywell 15" pedestal oscillating fan	1
	Dry-erase whiteboard, 24"x18"	1
	White melamine bookcase, 35"x12"x72", 5 shelves	1
	Beige metal office cart	1
	Sections of white melamine wall-mounted shelving	3
1ST FLOOR / 41 - OFFICE		
	Black fabric secretary chair on casters	1
	Black metal multi-media cart	1
	Red metal, adjustable height table, on casters	1
	Wood's freezer, 46"x27"x34"	1
	GE AM/FM radio	1
	White Westinghouse freezer, 27"x22"x34"	1
	Beige fabric armchair on casters	1
	Maple melamine desk, 60"x30", 3 drawer	1
	Brown melamine and chrome table, 60"x30"	1
	Waste paper basket	1
	Beige metal filing cabinet, 4 drawer, lateral	1
	Canon photocopier model: NP2020, s/n CZX 02243	1
	Black metal filing cabinet, 4 drawer, legal	1
	White melamine bookcase, 33"x21"x32", 2 shelves	1
	Brother electric type writer model: EM-430	1
	Corkboard, 36"x24"	1
	White plastic garbage	1
1ST FLOOR / 42 - COLD ROOM		
	Assorted sections of metal shelving	6
	Metro utility cart, 48"x24"x60", 5 tier	1
	Metal cages on wheels, 28"x28"x74"	2
1ST FLOOR / 43 - COLD ROOM		
	Assorted sections of metal shelving	9
	Green plastic lawn chair	1
	Kickstep	1
1ST FLOOR / 44 - PRODUCTION LAB		
	White vinyl stool	1
	Grey melamine, wall-mounted shelf, 96"x25"	1

LOCATION/ROOM	DESCRIPTION	QTY
1ST FLOOR / 47 - PRODUCTION LAB		
	Assorted white melamine, wall mounted shelves	6
	Orange fabric armchair	1
	Grey plastic cabinet, 2 door	1
	Beige plastic garbage	1
1ST FLOOR / 48		
	Assorted white melamine, wall mounted shelves	4
	Garbage bin	1
	White melamine bookcase, 15"x13"x54", 3 shelves	1
1ST FLOOR / 49 - PRODUCTION LAB		
	Black vinyl stool	1
	Waste paper basket	1
	Assorted corkboards	2
	Beige metal filing cabinet, 2 drawer, legal	1
	Kickstep	1
	Assorted white melamine, wall-mounted shelves	5
	Beige metal wall mounted cabinets, 2 glass doors	2
1ST FLOOR / 50		
	A-Line Heat Seal Corp medical packaging machine model:CBLISTER, s/n 3335	1
	Continental Manufacturing Company commander fogger, fog machine	1
	Brown melamine table 60"x30"	1
	Black vinyl stool	1
	Assorted white melamine cabinets	3
1ST FLOOR / 51		
	Capmatic custom-assembled stainless steel bottle capping machine; with rotating entry and exit 40" platforms, 120" feed conveyor, automatic capper, labeler, controls, and 4 assorted bottle size packer wheels	1
	Plastic bins	6
	Kickstep	1
1ST FLOOR / 52		
	Plastic bins	4
	Section of black metal shelving	1
1ST FLOOR / 54 - HALLWAY		
	Metro cart, 4 tier	1
	Metal cage on wheels, 28"x28"x74"	1
	Custom made wooden materials handling carts, 26"x23"x50"	5
	Waste paper basket	1
	Wooden cabinet, 108"x30"x37", 6 doors	1
	Wooden wall-mounted cabinet, 2 shelves	1
	Mover's dollies	2
1ST FLOOR / 54B		
	Beige plastic cabinet, 2 door	1
	White melamine bookshelf, 3 shelves	1
	Plastic garbage	1
	Wooden dollies	3
1ST FLOOR / 60 - HEATING		
	Mop & bucket with ringer	1
	Step ladder, 3'	1

LOT 6
TELEPHONE SYSTEM

ADALTIS INC. (10900 HAMON)

TELEPHONE SYSTEM

LOCATION/ROOM	DESCRIPTION	QTY
1ST FLOOR / 34 - MACHINE SHOP		
	Nortel Norstar telephone system consisting of:	
	- Norstar Plus modular ICS key service unit model: NT7B53FA-93; with power supply cartridge model: NT7B62FA-93, MICS NVRAM R1 cartridge model: NTBB08GA-93, and 2 caller ID cartridges model: NT5B41GA-93	1
	- M12XO Trunk module model: NTBB20FB-93; with caller ID cartridge model: NT5B41GA-93	1
	- MOX16 Fiber station modules model NTBB41FB-93	2
	- Voicemail NAM 6/ACD application module model: NT5B74AAAZ	1
	- Remote utilities module L'UAD éclair	1
RECEPTION	Nortel telephone set model: M7324, with C.A.P model: NT8B41FA	1
	Plantronics headset with lifting arm and cordless amplifier	1
2ND FLOOR / 2A	Nortel telephone set model: M7310	1
2ND FLOOR / 2B	Nortel telephone set model: M7310	2
	Nortel telephone set model: M7324	1
2ND FLOOR / 3A	Nortel telephone set model: M7310	1
2ND FLOOR / 3B	Nortel telephone set model: M7208	1
	Polycom Nortel Norstar Clarity audioconferencing unit (spider phone) model: 2501-03308-001 (NTAB2666)	1
2ND FLOOR / 4	Nortel telephone set model: M7310	1
2ND FLOOR / 5	Nortel telephone set model: M7208	1
2ND FLOOR / 6A	Nortel telephone set model: M7208	1
2ND FLOOR / 6B	Nortel telephone set model: M7310	1
2ND FLOOR / 7	Nortel telephone set model: M7310	1
2ND FLOOR / 9	Nortel telephone set model: M7310	1
2ND FLOOR / 11	Nortel telephone set model: M7310	1
2ND FLOOR / 13	Nortel telephone set model: M7208	1
2ND FLOOR / 15B	Nortel telephone set model: M7310	1
2ND FLOOR / 15C	Nortel telephone set model: M7310	2
2ND FLOOR / 16A	Nortel telephone set model: M7324	1
2ND FLOOR / 16B	Nortel telephone set model: M7310	1
2ND FLOOR / 17A	Nortel telephone set model: M7310	1
2ND FLOOR / 17B	Nortel telephone set model: M7310	1

LOT 7
SURVEILLANCE & ACCESS CONTROL

LOT 8
BUILDING COMPONENTS

ADALTIS INC. (10900 HAMON)

BUILDING COMPONENTS

LOCATION/ROOM	DESCRIPTION	QTY
2ND FLOOR / 6A - LAB OFFICE		
	Beige metal laboratory fume hood and cabinet, 90"x30"x102", 3 doors, with pull down glass shield, gas outlet, water tap & built in drain, lighting, and electrical outlet	1
2ND FLOOR / 6B - LAB OFFICE		
	Beige metal laboratory fume hood and cabinet, 90"x30"x102", 3 doors, with pull down glass shield, gas outlet, water tap & built in drain, lighting, and electrical outlet	1
2ND FLOOR / 9 - LAB		
	Rapid Refrigeration custom reach-in refrigerator (note: door # 80), 36"x20"x80", 1 door, 4 shelves, and exterior thermometer	1
	Manufacturer unknown custom walk-in cold room (note: door # 10), 180"x96"x96", single door with tempered glass window, dual fan chiller, lighting, and thermometer	1
	Manufacturer unknown custom cargo elevator (dumb waiter), 32"x30"x60", with 2 controls	1
2ND FLOOR / 13 - LAB		
	Beige metal cabinet & fume hood 118"x36"x96", 5 doors, 2 tempered glass sliding doors, 2 taps, 2 in-counter drains, lighting, adjustable panels, electric outlets, and controls	1
	Beige metal/black modular melamine lab counter, 8 drawer, 12 door, 2 stainless steel sinks, approx 28'x3'	1
1ST FLOOR / 31		
	Beige and blue metal/blue melamine counter, 25"x25", with sink	1
	Black and white melamine counters, 144"x25", 8 doors	2
1ST FLOOR / 32 - COLD ROOM		
	Manufacturer unknown custom walk-in cold room approx 10'x30'x8', 2 doors (1 with tempered glass window), 2 dual fan Keeprite chillers, lighting, and thermometers	1
1ST FLOOR / 37		
	Beige metal laboratory fume hood, 47"x30"x94", with pull down glass shield, and electrical outlet	1
	Beige metal laboratory fume hood and cabinet, 94"x30"x94", 4 doors, with 2 pull down glass shields, and electrical outlet	1
	Blue melamine counter, 6 drawer, 8 door, with sink	1
1ST FLOOR / 40E		
	Blue melamine counter, 4 door, 2 drawer, with sink	1
	Blue melamine counter, 8 door, 8 drawer	1
1ST FLOOR / 42 - COLD ROOM		
	Manufacturer unknown walk-in cold room model: PP-120-12-R, approx 12'x12'x7', dual fan chiller, single door with tempered glass window, lighting, and thermometer	1
1ST FLOOR / 44		
	Blue melamine counter, 9 drawer, 9 door, with sink	1
1ST FLOOR / 47		
	Blue melamine counter, 5 door, 16 drawer, with sink	1
1ST FLOOR / 48		
	Stainless steel/black melamine cabinet, 4 door, 84"x25"x36"	1
1ST FLOOR / 49		
	U-shaped grey melamine counter, 6 doors	1

LOT 9
PROPERTY OF OTHERS

ADALTIS INC. (10900 HAMON)

PROPERTY OF OTHERS

LOCATION/ROOM	DESCRIPTION	QTY
RECEPTION		
	Moneris interact terminal model: V2000, s/n 15759252-98007263, Moneris #: ST3+80007263; with PIN pad s/n 12259842-93629870, Moneris #: ROYAL EPT3+ 93629870; Scribe printer model: 612, s/n 23050344-00280095, Moneris #: S612 97280095; and black plastic tray	1
2ND FLOOR / 9 - LAB		
	Lot of 5 cylinders, marked "mixed bed" (high-pressure style)	1
2ND FLOOR / 21 - PHOTOCOPY ROOM		
	Shred-IT grey melamine box	1
	Canon color photocopier model: imageRUNNER C3220, s/n JNC18348	1
2ND FLOOR / HALLWAY		
	Shred-IT grey melamine box	1
2ND FLOOR / 23 - SERVER ROOM		
	Cisco 1800 series router	1
	Netscreen modem	1
	US Robotics 56k faxmodem	1
	ADC HiGain remote enclosure model: HRE422, with ADC H4TUR402 HDSL2 remote line card	1
	Speedstream modem	1
1ST FLOOR / ENTRANCE		
	DVACS line terminal box model: F1E2-L3	1
1ST FLOOR / 37 - STORAGE/SHIPPING		
	Section of metal lockers, 8 doors, with laundry receptacle	1
	(Throughout) lot of lab coats	1
1ST FLOOR / 55 - CUBICLES		
	Shred-IT grey melamine box	1

TERMS AND CONDITIONS GOVERNING THE SALE OF THE ASSETS OF ADALTIS INC.

1. GENERAL PROVISIONS

- 1.1 RSM Richter Inc, in its capacity as Trustee to the Bankrupt Estate of Adaltis inc. or in its capacity as Designated Person under the provisions of the Civil Code of Quebec (CCQ) (hereinafter referred to in either capacity as "RICHTER" or "VENDOR") is seeking to sell Adaltis Inc. ("ADALTIS") assets on **a lot by lot or en bloc basis**. The VENDOR is hereby soliciting offers for the sale of its rights, title and interest, if any, in and to the assets of ADALTIS (hereinafter referred to as the "ASSETS"). The following terms and conditions govern the present solicitation and form an integral part of all offers (hereinafter referred to as the "OFFER(S)") submitted by prospective purchasers (hereinafter referred to as the "OFFEROR(S)" or "PURCHASER(S)").
- 1.2 **With respect to items designated in all lots and/or sub-lots under the heading "Property of Others" (or identified as "PO") or under the heading "Building Components" in any listing contained herein, the OFFEROR acknowledges that the VENDOR is not selling its interest, if any, therein. Consequently, all items identified as "Property of Others", "PO" , or "Building Components" are excluded from the sale contemplated herein.**
- 1.3 The VENDOR reserves the right to reject any and/or all OFFERS, including the highest one.
- 1.4 The VENDOR reserves the right to waive or vary any or all of the conditions with regard to the acceptance of the OFFERS at any time, including after the opening of tenders.
- 1.5 The VENDOR shall have the right to withdraw its acceptance of any OFFER at any time prior to the delivery of the ASSETS to which the acceptance relates if any or all of the ASSETS, for any reason, is unable to be delivered. In the event of such withdrawal, the VENDOR will refund any amounts received from the OFFEROR on account of the PURCHASE PRICE (as

hereinafter defined) and the OFFEROR will have no further rights or recourse against the VENDOR.

- 1.6 The VENDOR reserves the right to exclude from the solicitation of offers any or all of the ASSETS included herein.

2. FORM AND DELAYS

- 2.1 The OFFERS will be received until Monday October 5th, 2009 at 3:00 PM (Eastern Daylight Time) at the office of the VENDOR located at 2 Place Alexis Nihon, Suite 1820, Montréal, Quebec H3Z 3C2.
- 2.2 The OFFERS shall be opened in private in the presence of the representatives of the Secured Creditors. The VENDOR shall notify all OFFERORS of the acceptance or rejection of their respective OFFERS subsequent thereto.
- 2.3 **OFFERS may be submitted for individual lots, or “en bloc”. However, an “en bloc” OFFER must include a separate allocation for each lot and sub-lot.**
- 2.4 **Any PURCHASER who wishes to acquire lot 4 (Lab and Scientific Equipment) must also seek to acquire lot 4b) (Lab Tables and Counters) and must provide a separate allocation for lot 4 and lot 4b). No OFFER for lot 4 will be considered if it does not include an allocation for lot 4b).**
- 2.5 **Only sealed envelopes marked “Offer: Adaltis Inc.” containing a certified cheque or money order for an aggregate amount (“DEPOSIT”) representing fifteen percent (15%) of the amount for all lots payable to RSM Richter Inc., in trust, will be considered.**
- 2.6 If an OFFER is refused by the VENDOR, the DEPOSIT will be returned forthwith to the OFFEROR, without interest, unless it is retained in accordance with the provisions hereof.
- 2.7 All OFFERS must be made using the Standard Form of Offer included herewith, failing which, the VENDOR reserves the right, in its sole discretion, to reject any non-conforming OFFERS.

- 2.8 The OFFER submitted constitutes a firm and legal commitment on the part of the OFFEROR and cannot be withdrawn or revoked.
- 2.9 All OFFERS must stipulate that they are open for acceptance until Friday October 9, 2009 at 3:00 PM (Eastern Daylight Time).

3. PRICE AND ADJUSTMENTS

- 3.1 The entire purchase price of the ASSETS (hereinafter referred to as the "PURCHASE PRICE") plus applicable taxes (from which will be deducted the DEPOSIT, without interest), must be paid by certified cheque or money order at CLOSING (as hereinafter defined) or on such other terms as are acceptable to the VENDOR.
- 3.2 The DEPOSIT will be kept by the TRUSTEE as security to guarantee the execution by the OFFEROR of all obligations as contemplated herein and to be dealt with in accordance with the terms hereof.
- 3.3 The PURCHASER shall further pay at CLOSING (as hereinafter defined), in addition to the PURCHASE PRICE, all taxes, whether Federal, Provincial or Municipal applicable or payable by reason of the sale of the ASSETS or of the transfer of ownership thereof. Should any taxes not be paid at the time of CLOSING for any reason whatsoever, including error, omissions or otherwise, the OFFEROR nonetheless shall remain responsible for all such taxes, which liability and obligation shall survive any formal CLOSING;
- 3.4 The PURCHASER shall further be responsible to pay all costs, if any, of dismantling or removing the ASSETS from their present location and restoring such location(s) to neat and clean conditions and the cost of repairing any damage caused by dismantling or removing the ASSETS from their present location.
- 3.5 Should the VENDOR be unable to deliver any of the ASSETS comprised within any of the lots or sub-lots, the VENDOR shall have the option to arrange for the discharge or removal of the encumbrance, as the case may be, or to exclude such ASSETS, from the sale. In the latter case, the PURCHASE PRICE shall be adjusted by an amount to be agreed upon between the

VENDOR and the OFFEROR, failing which, such adjustment shall be done by the VENDOR requesting that a third party auctioneer of the VENDOR's own choosing, stipulate the liquidation value of the excluded ASSETS. Where an entire lot or sub-lot cannot be delivered, the amount of the adjustment will be equal to the allocation made for such lot or sub-lot by the OFFEROR as required by Section 2.3 hereof.

- 3.6 In the event that the PURCHASER fails to proceed with the CLOSING (except in circumstances under which it is not obliged to do so hereunder) or to pay, at CLOSING, the PURCHASE PRICE, the VENDOR may retain, on account of the damages resulting from the default of the OFFEROR and not as a penalty, any portion of the PURCHASE PRICE paid by the OFFEROR, including the DEPOSIT, without prejudice to the VENDOR's rights and recourse, including the VENDOR's right to claim further damages from the OFFEROR.

4. CLOSING

- 4.1 The closing of the sale of the ASSETS (hereinafter referred to as the "CLOSING") will take place unless otherwise agreed in writing by the VENDOR and the PURCHASER on the later of:

- (a) Twenty (20) days following the acceptance of the Offer by the Vendor;
- (b) Any other time that is mutually agreed to between the VENDOR and the OFFEROR.

5. DELIVERY, OWNERSHIP & POSSESSION

- 5.1 The VENDOR will remain in possession and will remain owner of the ASSETS until the PURCHASE PRICE (as hereinafter defined) has been paid in full.
- 5.2 At CLOSING and upon payment of the PURCHASE PRICE, the OFFEROR will take possession of the ASSETS on an "as is/where is" basis, at its own cost, without any liability on the part of the VENDOR and, if applicable, will remove same after CLOSING within a period of fourteen (14) days thereafter. Any additional occupancy period required by the OFFEROR

will have to be negotiated with the VENDOR or the owner of the premises solely by the OFFEROR, at its sole cost, risk and peril. The OFFEROR, at its sole cost and expense, must utilize the services of licensed plumbers and/or electricians to remove any ASSETS and to insure that all water, sewer and gas pipes are properly capped, sealed and labelled, and that all electrical wiring is disconnected and properly identified. Any damages to the premises incurred while removing the ASSETS are the sole responsibility of the OFFEROR. The OFFEROR holds the VENDOR harmless from and undertakes to indemnify it from any liability or any claim whatsoever with respect thereto. Should any ASSETS be affixed to the premises or require modifications to the premises, written permission to remove the ASSETS will have to be obtained by the PURCHASER from the VENDOR or the owner, if applicable.

6. REPRESENTATIONS OF OFFEROR

Every OFFER shall be deemed to contain the following provisions which shall be deemed to be part of the sale of the Assets:

- 6.1 The OFFEROR does hereby acknowledge and agree that it has inspected the ASSETS and declares that it is completely satisfied with the nature, quality, quantity, condition, etc. of said ASSETS. The OFFEROR further acknowledges that the ASSETS, as well as such right, title and interest as the VENDOR may possess in and to said ASSETS, are to be purchased and sold on an "as is/where is" basis, at the risk and peril of the OFFEROR, without any condition, representation, collateral agreement or warranty whatsoever, expressed or implied, legal or contractual, and whether arising out of statute or the operation of law, or as to any matter whatsoever, including without limiting the generality of the foregoing, any representation, whether written or verbal, any warranty against eviction or hidden defect, any covenant or representation with respect to the suitability for the purpose for which the ASSETS are intended, or fitness, quantity, quality, merchantability, durability, or valuation of the ASSETS. It is the OFFEROR's sole responsibility to have the ASSETS inspected by the appropriate government authorities, if necessary, before reselling, or otherwise transferring said ASSETS to third parties.
- 6.2 The OFFEROR further acknowledges that the OFFER and the agreement which may result from the VENDOR's acceptance thereof, are based only and entirely upon its own inspection

and investigation of the ASSETS. Moreover, any information obtained by the OFFEROR from the TRUSTEE or the VENDOR and/or their representatives or included in the Information Package, with respect to the ASSETS has been prepared solely for the convenience of the OFFEROR and for information purposes only and is not warranted to be accurate or complete and does not form part of the terms of these presents.

- 6.3 The OFFEROR agrees to assume, at its cost, complete responsibility for compliance with all Municipal, Provincial and Federal laws and regulations insofar as same apply to the purchased property and the use thereof by the OFFEROR.
- 6.4 The OFFEROR further acknowledges that it has inspected the ASSETS for the presence of any contaminants or hazardous materials as defined by any applicable legislation, and that it holds the VENDOR harmless from and indemnifies it from any liability or any claim whatsoever with respect thereto.
- 6.5 The PURCHASER acknowledges that the VENDOR is acting as Trustee to the Bankrupt Estate of Adaltis Inc. or as Designated Person under the provisions of the Civil Code of Quebec (CCQ), and shall not incur any personal or corporate liability of whatsoever kind or nature relating to the sale of the ASSETS contemplated herein.
- 6.6 The PURCHASER agrees to assume complete responsibility for the transfer of any licences and permits relating to the operation of the business and/or the issuance of new licences and permits. The PURCHASER acknowledges that the VENDOR makes no warranty or representation as to the transferability of any licences or permits. All costs pertaining to same shall be borne by the PURCHASER at the VENDOR'S complete exoneration.

7. OTHER

- 7.1 When an OFFER for any ASSETS is accepted, the terms of the OFFER prepared by the OFFEROR and the acceptance thereof, and the present terms and conditions shall constitute an agreement of purchase and sale between the OFFEROR and the VENDOR with respect to such ASSETS unless otherwise agreed upon in writing between the VENDOR and the OFFEROR.

- 7.2 The successful OFFEROR may not use for advertisement or similar purposes the name of RSM Richter Inc. and Adaltis Inc. in any advertising, marketing publication or public announcement, without the prior written consent of such parties, which consent such parties may refuse to grant in their absolute discretion.
- 7.3 All OFFERS and the sale herein contemplated are subject to the approval of the Secured Creditors of ADALTIS.
- 7.4 The OFFER and any agreement of purchase or of sale shall be governed by and construed in accordance with the laws of the province of Quebec.

DATED AT MONTREAL, this 21st day of September 2009.

RSM RICHTER INC.

In its capacity as Trustee to the Bankrupt Estate of Adaltis Inc. or as Designated Person under the provisions of the Civil Code of Quebec (CCQ)

**ADALTIS INC.
OFFER FORM**

TO: RSM Richter Inc.
Re: Adaltis Inc.
2 Place Alexis Nihon, Suite 1820
Montréal, Quebec H3Z 3C2

1. NAME OF TENDERER: _____

2. ADDRESS OF TENDERER: _____

3. TELEPHONE NUMBER: _____

4. FACSIMILE NUMBER: _____

5. The undersigned acknowledges having received from RSM Richter Inc. and reviewed the Terms and Conditions of Sale as set forth in the Information Package of Adaltis Inc. and acknowledges that this offer for the lot(s) and/or sub-lot(s) is submitted pursuant to said terms and conditions and the undersigned agrees to be bound thereby as if same were set out herein at length as part of this tender. Subject to the Terms and Conditions of Sale of the sale by tender of the assets of Adaltis Inc., I (we) submit this tender:

Lot 1	Office Equipment	\$ _____
Lot 2	Computer Equipment	_____
Lot 3	Servers	_____
Lot 4	Lab and Scientific Equipment	_____
Lot 4b)	Lab Tables and Counters	_____
Lot 5	Shop and Packaging Equipment	_____
Lot 6	Telephone System	_____
Lot 7	Surveillance and Access Control Equipment	_____
TOTAL	(taxes extra)	\$ _____

6. You will find enclosed my (our) certified cheque/money order to the order of RSM Richter Inc., in trust, in the amount of \$ _____, representing 15% of the amount for all lots.

This offer is open for acceptance until Friday October 9, 2009 at 3:00 p.m. (Eastern Daylight Time).

DATED at _____, this _____ day of _____, 2009.

 Authorized Signature (print and sign)